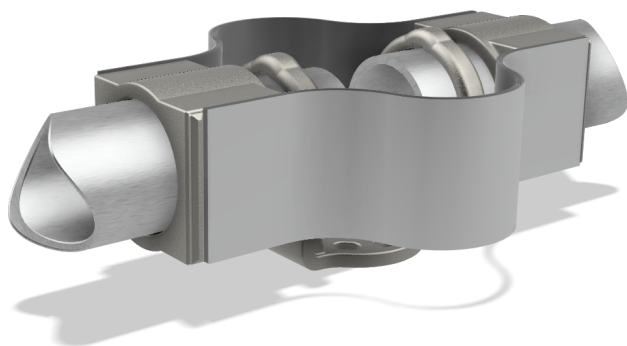
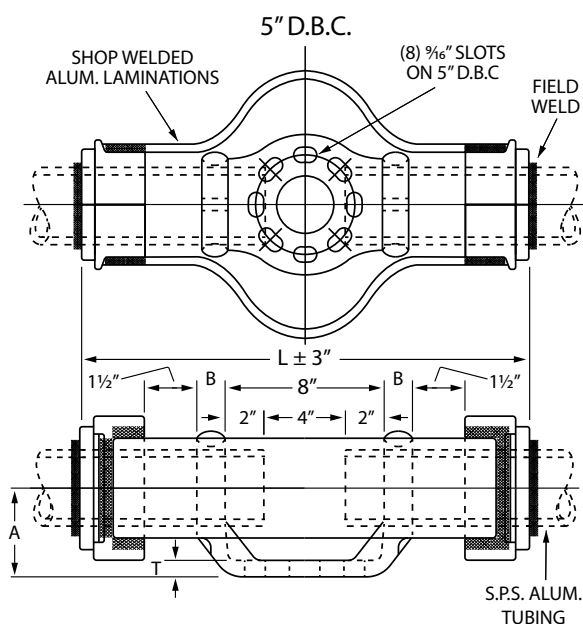
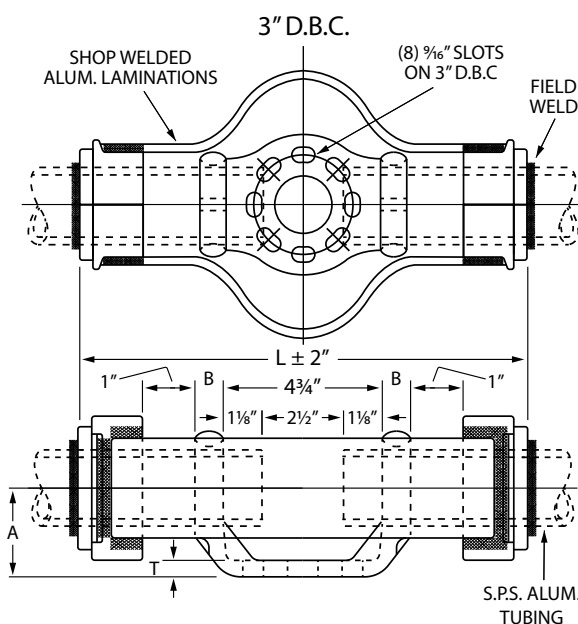


Welded Bus Supports

WRX-W Expansion Support



The "WRX" with suffix "W" is an all welded aluminum expansion connector with welded laminated shunts. Shunt material is #1100-0 aluminum alloy with each lamination .020" thick for maximum flexibility. Cast parts are #356, heat treated to T6 temper. Lamination is designed for maximum of 2,000 ampere service at 30°C rise. For higher ampere rating, specify at time of order.



S.P.S. SIZE	3" & 5" BOLT-CIRCLE			3" BOLT-CIRCLE		5" BOLT-CIRCLE	
	DIM. IN INCHES			CATALOG NO.	DIM. IN INCHES L	CATALOG NO.	DIM. IN INCHES L
	A	B	T				
2	2 3/4	3/4	7/16	WRX-305-AL-W	12 1/8	WRX-505-AL-W	16 3/8
2 1/2	3 1/8	3/4	7/16	WRX-306-AL-W	12 1/8	WRX-506-AL-W	16 3/8
3	3 5/8	7/8	7/16	WRX-307-AL-W	12 5/8	WRX-507-AL-W	16 7/8
3 1/2	4	1	1/2	WRX-308-AL-W	13 1/8	WRX-508-AL-W	17 3/8
4	4 1/2	1 1/8	1/2	WRX-309-AL-W	13 3/4	WRX-509-AL-W	18
5	5	1 1/8	1/2	WRX-310-AL-W	14 1/4	WRX-510-AL-W	18 1/2
6	5 1/2	1 1/4	1/2	WRX-311-AL-W	15 1/4	WRX-511-AL-W	19 1/2

For cross reference or other
information, please contact us.
deltastarcc.com



**DELTA STAR
CONNECTOR COMPANY**

