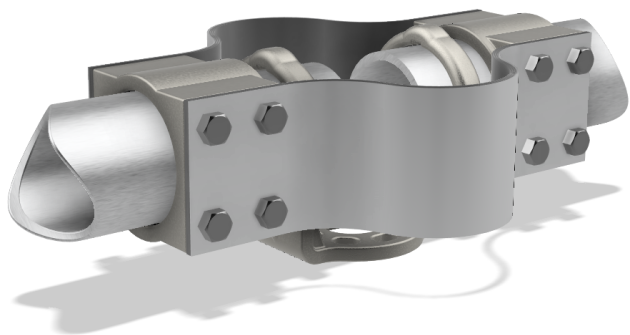
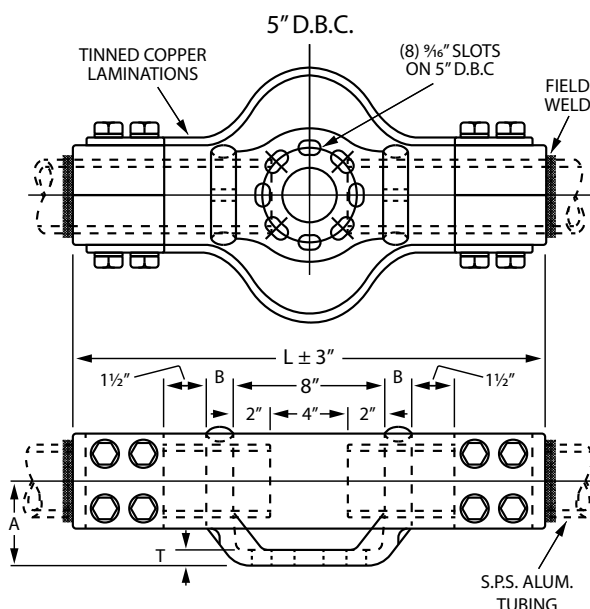
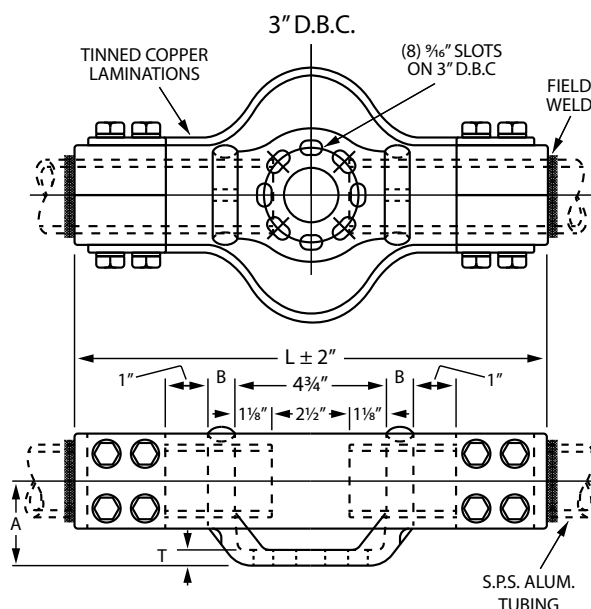


Welded Bus Supports

WRX Expansion Support



The "WRX" welding expansion bus support has tinned copper laminated shunts bolted to the aluminum castings. Shunt material is pre-tinned copper with each lamination .0113" thick. Laminations are sweated together under pressure to form a one-piece pad at each end. Cast parts are #356, heat treated to T6 temper. At the time of installation, it is recommended that shunts be removed from casting before welding. After welding, scratch brush casting contact surfaces through NO-OX-ID and reattach shunts. Lamination is designed for maximum of 2,000 ampere service at 30°C rise. For higher ampere rating, specify at time of order.



S.P.S. SIZE	3" & 5" BOLT-CIRCLE			3" BOLT-CIRCLE		5" BOLT-CIRCLE	
	DIM. IN INCHES			CATALOG NO.	DIM. IN INCHES L	CATALOG NO.	DIM. IN INCHES L
	A	B	T				
2	2 3/4	3/4	7/16	WRX-305-AL	14 1/8	WRX-505-AL	18 3/8
2 1/2	3 1/8	3/4	7/16	WRX-306-AL	14 1/8	WRX-506-AL	18 3/8
3	3 5/8	7/8	7/16	WRX-307-AL	15	WRX-507-AL	19 1/4
3 1/2	4	1	1/2	WRX-308-AL	15 3/4	WRX-508-AL	20
4	4 1/2	1 1/8	1/2	WRX-309-AL	16	WRX-509-AL	20 1/4
5	5	1 1/8	1/2	WRX-310-AL	16	WRX-510-AL	20 1/4
6	5 1/2	1 1/4	1/2	WRX-311-AL	16 1/4	WRX-511-AL	20 1/2

For cross reference or other
information, please contact us.
deltastarcc.com



**DELTA STAR
CONNECTOR COMPANY**

