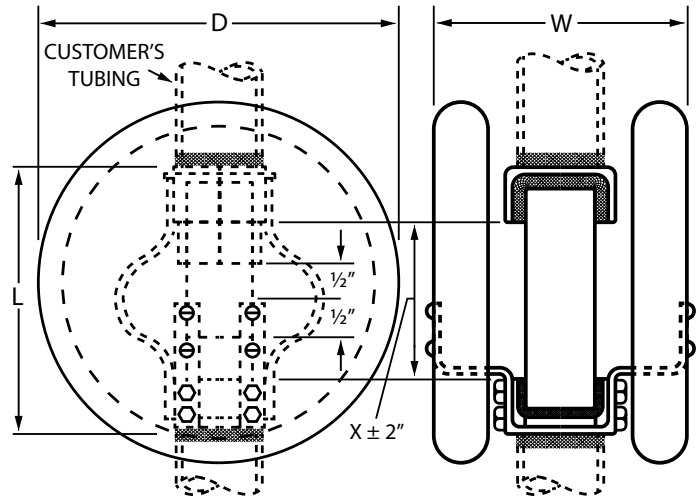
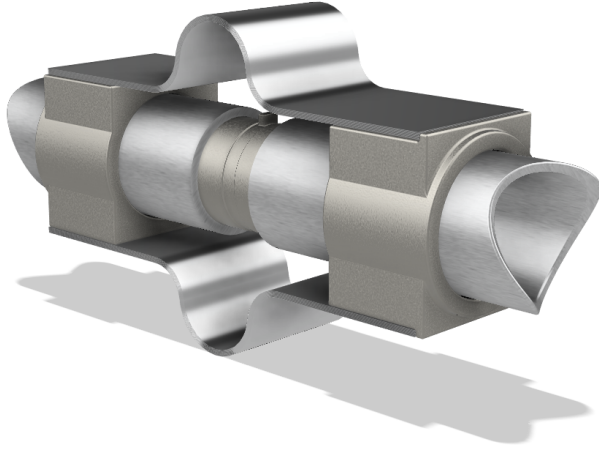


Expansion Connectors

WPXPL-W Tube - Tube



-FOR S.P.S. SCHEDULE 40 OR 80 TUBE TO TUBE-

Type "WPXPL-W" welding expansion connector is an all welded aluminum connector with factory welded aluminum shunts. Shunt material is #1100-0 aluminum alloy with each lamination .020" thick for maximum flexibility. Cast parts are #356, heat treated to T-6 temper. All shunts have flex angles permanently set at the factory for proper expansion and contraction in the field. Laminations are designed for a maximum of 2000 ampere service at 30°C rise. For higher ampere ratings please specify at time of order. All connectors are furnished with alignment guides. For extra long spans standard WS straight couplers are used for alignment guides to insure strength. For protection against corona, two corona shields are bolted to the casting. For up through 550 kV.

S.P.S. REG	CATALOG NUMBER	D	W	X	L
2 1/2	WPXPL-5160-W	21	10 3/4	7 1/2	11 3/8
3	WPXPL-5170-W	21	11 1/4	8	12 1/8
3 1/2	WPXPL-5180-W	21	11 3/4	9	13 3/8
4	WPXPL-5190-W	21	12 1/4	9	13 3/4
5	WPXPL-5310-W	21	13 3/4	10	15 1/4
6	WPXPL-5320-W	21	14 1/2	10	16

For cross reference or other
information, please contact us.
deltastarcc.com



**DELTA STAR
CONNECTOR COMPANY**

