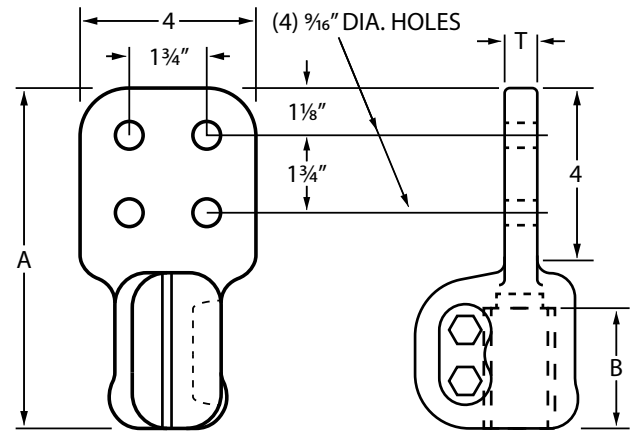
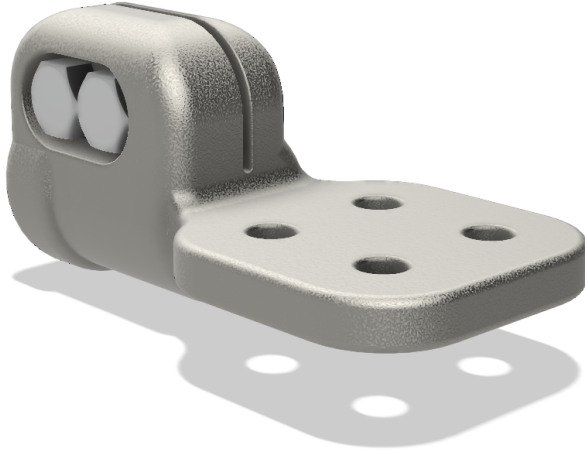


Stud Connectors

SBES Pad to Stud



The "SBES" stud connector is an aluminum bodied unit designed for making a flat pad connection to an aluminum equipment stud. Connectors will carry the full rated current of pad or stud, whichever is smaller. For up through 550 kV using bolt shields.

CATALOG NUMBER	THREADED STUD	UNTHREADED STUD	DIAMETER IN INCHES			BOLT DIAMETER IN INCHES
			A	B	T	
SBES-1181	1 1/2 to 12	-	7 5/8	2 1/8	5/8	1/2
SBES-1281	-	1 1/2D	7 5/8	2 1/8	5/8	1/2
SBES-1190	2 to 12	-	7 3/4	2 1/4	3/4	1/2
SBES-1290	-	2D	7 3/4	2 1/4	3/4	1/2
SBES-1200	2 1/2 to 12	-	7 7/8	2 3/8	3/4	1/2
SBES-1300	-	2 1/4D	7 7/8	2 3/8	3/4	1/2
SBES-1205	2 1/2 to 12	-	8	2 5/8	7/8	1/2
SBES-1305	-	2 1/2D	8	2 5/8	7/8	5/8
SBES-1210	3 to 12	-	8 1/2	3 1/4	1	5/8

For cross reference or other
information, please contact us.
deltastarcc.com



**DELTA STAR
CONNECTOR COMPANY**

