

# Terminal Connectors

## LS Cable to Pad

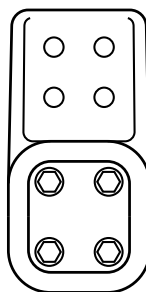
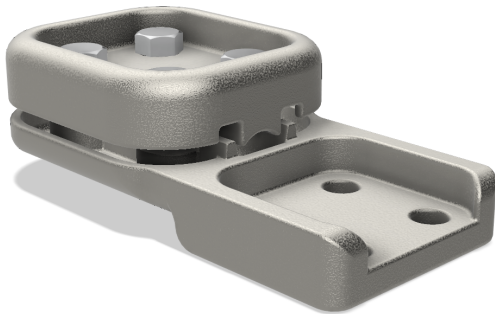


Fig. 1

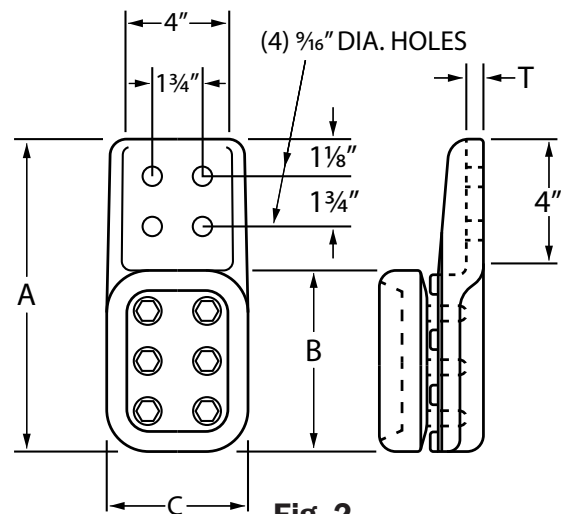


Fig. 2

Type "LS" terminal lug provides a means of connecting a wide range of aluminum or A.C.S.R. cable to the terminal pad of a switch or other similar equipment. This lug is designed to carry the full rated current of the maximum cable in the range. For up through 550 kV when pad area is within equipment corona rings or shielded by pad covers. Units can be furnished with 3" x 3" pads.

CABLE RANGE A.W.G. OR M.C.M.		FIGURE NUMBER	CATALOG NUMBER	DIMENSIONS IN INCHES				BOLT DIAMETER IN INCHES
ALUMINUM	A.C.S.R.			A	B	C	T	
500 to 800	397.5 to 666.6	1	LS-1142	9	4 3/4	4 3/16	5/16	5/8
750 to 1000	636 to 900	2	LS-1152	9 5/8	5 3/8	4 3/8	9/16	5/8
1000 to 1500	900 to 1272	2	LS-1162	10	5 3/4	4 5/8	5/8	5/8
1510.5 to 2000	1351.5 to 1780	2	LS-1172	10 1/4	6	4 15/16	3/4	5/8
2000 to 2500	2155 to 2493	2	LS-1182	10 1/4	6	5 1/8	5/8	5/8
3000 to 4000	2300 to 2515	2	LS-1192	11 1/4	7	5 5/16	3/4	5/8

