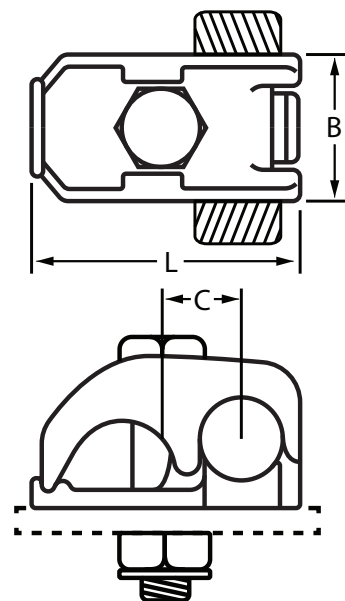
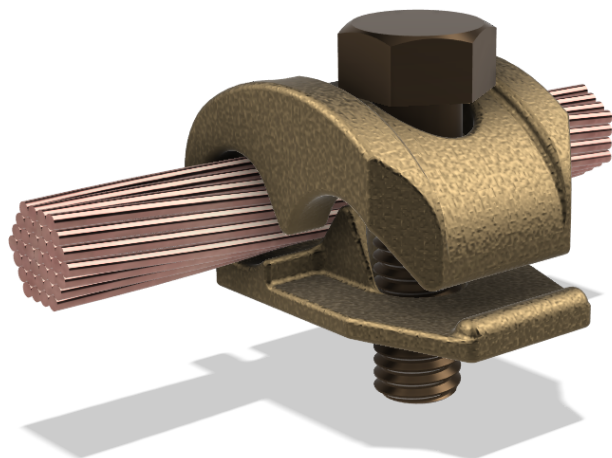


# Grounding Connectors

## GFS Cable to Flat Surface



Grounding connector for clamping a single grounding conductor to a flat surface such as a steel structure or equipment housing. Cast of high strength copper alloy, body of fitting will accommodate a wide range of cable sizes. Bolts, nuts, and lock washers are of hot galvanized steel to resist corrosion. Bolts of sufficient length to grip 1/4 inch thick bar are standard. Bolts for greater thickness can be supplied when specified.

CABLE RANGE*		CATALOG NUMBER		DIMENSIONS IN INCHES		BOLT DIAMETER
MINIMUM	MAXIMUM	TIN PLATE FINISH	BRIGHT DIP FINISH	L	W	
6	2/0	GFS-100	GFS-1000	1 5/8	1 1/4	1/2
1	4/0	GFS-200	GFS-2000	1 13/16	1 1/4	1/2
1/0	300	GFS-300	GFS-3000	2 1/8	1 3/8	1/2
300	500	GFS-400	GFS-4000	2 5/16	1 1/2	1/2
500	800	GFS-500	GFS-5000	3 1/8	1 3/4	5/8
750	1000	GFS-600	GFS-6000	3 1/2	2	5/8

For cross reference or other  
information, please contact us.  
[deltastarcc.com](http://deltastarcc.com)



**DELTA STAR  
CONNECTOR COMPANY**

