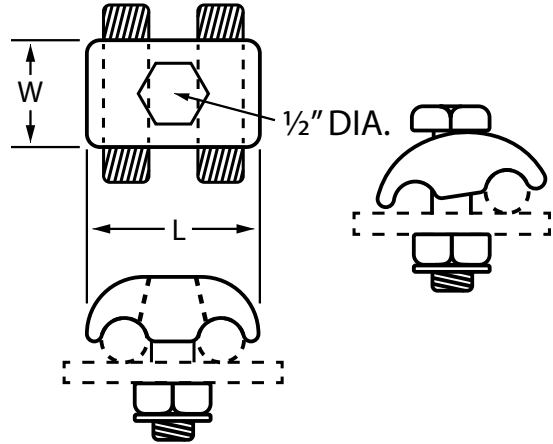
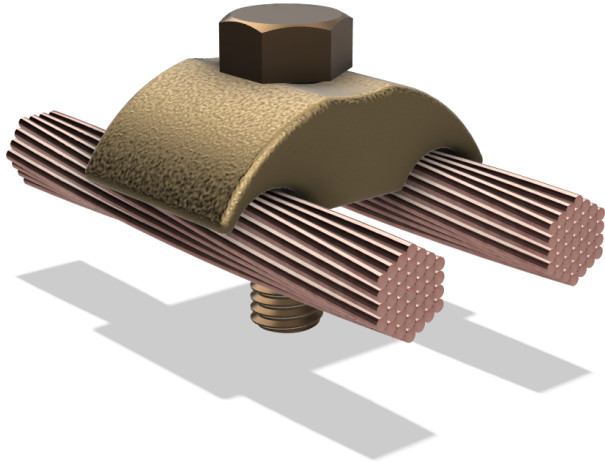


Grounding Connectors

GFH One or Two Cable to Flat Surface



GFH ground clamps are an economical means for clamping a single or two ground conductors of unequal size to a flat surface. Bolts are of sufficient length to grip 4 inch bar. Longer bolts can be supplied.

CABLE RANGE*		CATALOG NUMBER		DIMENSIONS IN INCHES	
MINIMUM	MAXIMUM	TIN PLATE FINISH	BRIGHT DIP FINISH	L	W
6	2/0	GFH-100	GFH-1000	1 3/4	1 1/8
1	4/0	GFH-200	GFH-2000	2 1/16	1 1/4
1/0	300	GFH-300	GFH-3000	2 3/8	1 1/2

For cross reference or other
information, please contact us.
deltastarcc.com



**DELTA STAR
CONNECTOR COMPANY**

