

Terminal Connectors

FLS For S.P.S. Tubing

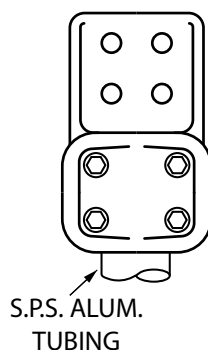
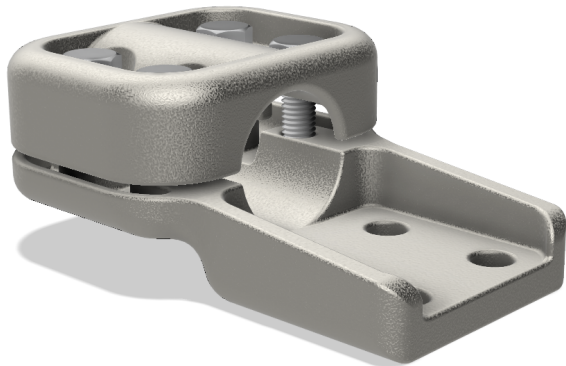


Fig. 1

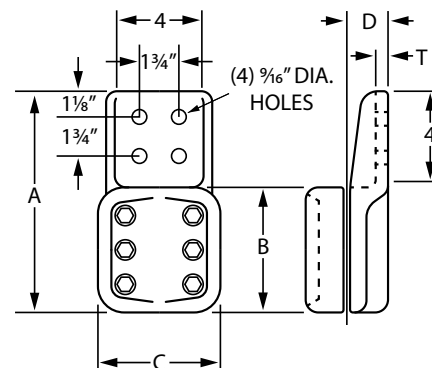


Fig. 2

Type "FLS" terminal lugs are designed to carry the full rated ampere capacity of the tubing or equipment whichever is smaller. Recessed bolt heads and extra heavy castings are designed to protect against the effects of corona. For up through 550 kV when the pad area is within equipment corona rings or shielded by pad covers. Units can also be furnished with 3" x 3" pads. Contact the factory.

S.P.S. SIZE	CATALOG NUMBER	FIGURE NUMBER	DIMENSIONS IN INCHES					BOLT DIAMETER IN INCHES
			A	B	C	D	T	
2 1/2	FLS-1171	1	9 1/4	5	6 1/4	2 5/64	9/16	5/8
3	FLS-1181	1	9 1/2	5 1/4	6 7/8	2 25/64	5/8	5/8
3 1/2	FLS-1190	1	9 3/4	5 1/2	7 3/8	2 45/64	11/16	5/8
4	FLS-1200	1	10 1/4	6	7 7/8	2 61/64	11/16	5/8
5	FLS-1210	2	11 1/4	7	8 15/16	3 1/2	3/4	5/8
6	FLS-1220	2	12 1/4	8	10	4 1/16	3/4	5/8

