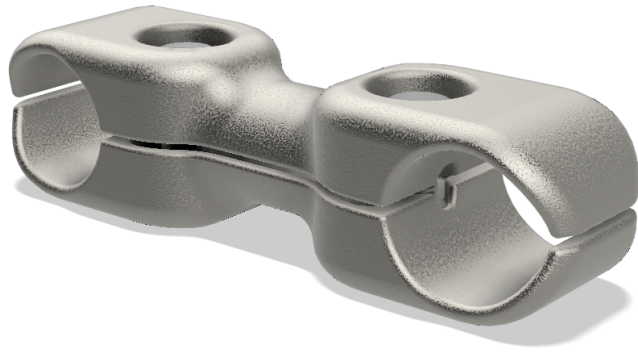


# Cable Spacers

## DCS Double Cable Spacer



Type "DCS" double cable spacer is a two piece unit designed especially for sure clamping of two cables. Cable grooves are rounded to prevent damage to the cables. Castings are made from #356 heat treated to the T-6 temper to insure long life. Two recessed bolts for 18" size and one for 6" and 8" size provide positive clamping. Cable spacers are available for a wide range of stranded MCM aluminum and ACSR cables. Figure 1 for up through 362 kV. Figure 2 for up through 550 kV.

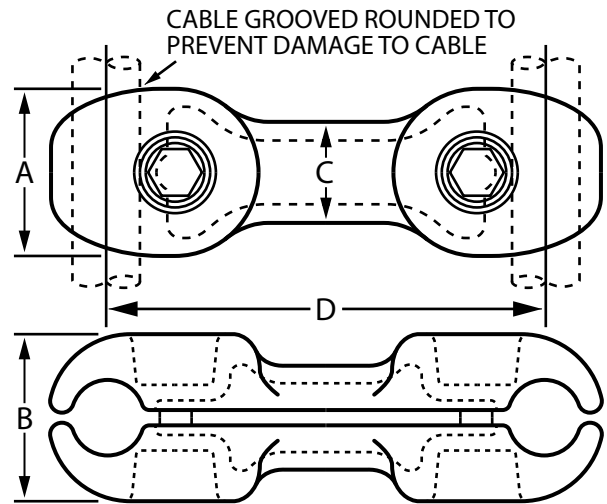


Fig. 1

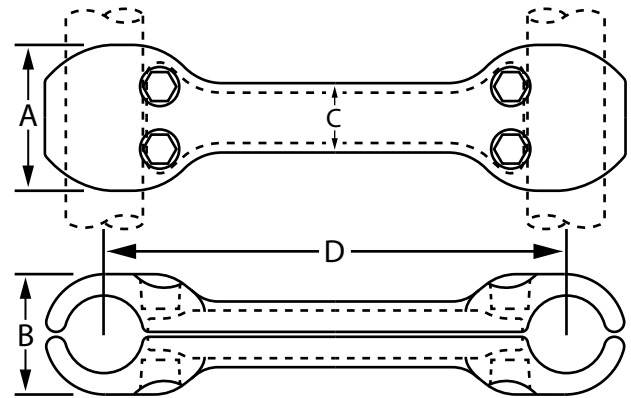


Fig. 2

CABLE RANGE		FIGURE NUMBER	CATALOG NUMBER	DIMENSIONS IN INCHES			
ALUMINUM	A.C.S.R.			A	B	C	D
550 to 650	477 to 556.5	1	DCS-300-6.5	2 1/2	2 1/4	1 1/2	6 1/2
700 to 800	605 to 715.5	1	DCS-301-6.5	2 1/2	2 1/2	1 1/2	6 1/2
900 to 1113	795 to 1033.5	1	DCS-302-6.5	2 1/2	2 1/2	1 1/2	6 1/2
1200 to 1510.5	1113 to 1351.5	1	DCS-303-6.5	2 1/2	2 1/2	1 3/4	6 1/2
1590 to 2000	1431 to 1780	1	DCS-304-6.5	2 1/2	2 7/8	1 3/4	6 1/2
2250 to 2500	2167 to 2300	1	DCS-305-6.5	2 1/2	3	1 3/4	6 1/2
2750 to 3000	2500 to 2515	1	DCS-306-6.5	2 1/2	3 1/4	2	6 1/2
550 to 650	477 to 556.5	1	DCS-500-8	2 1/2	2 1/4	1 1/2	8
700 to 800	605 to 715.5	1	DCS-501-8	2 1/2	2 1/2	1 1/2	8
900 to 1113	795 to 1033.5	1	DCS-502-8	2 1/2	2 1/2	1 1/2	8
1200 to 1510.5	1113 to 1351.5	1	DCS-503-8	2 1/2	2 1/2	1 3/4	8
1490 to 2000	1431 to 1780	1	DCS-504-8	2 1/2	2 7/8	1 3/4	8
2250 to 2500	2167 to 2300	1	DCS-505-8	2 1/2	3	1 3/4	8

(continued)

For cross reference or other  
information, please contact us.  
[deltastarcc.com](http://deltastarcc.com)



**DELTA STAR  
CONNECTOR COMPANY**



# Cable Spacers

## DCS Double Cable Spacer

(continued)

CABLE RANGE		FIGURE NUMBER	CATALOG NUMBER	DIMENSIONS IN INCHES			
ALUMINUM	A.C.S.R.			A	B	C	D
2750 to 3000	2500 to 2515	1	DCS-506-8	2 1/2	3 1/4	2	8
550 to 650	477 to 556.5	2	DCS-500-18	3 1/4	2 1/4	2	18
700 to 800	605 to 715.5	2	DCS-501-18	3 1/2	2 1/2	2	18
900 to 1113	795 to 1033.5	2	DCS-502-18	3 1/2	2 1/2	2	18
1200 to 1510.5	1113 to 1351.5	2	DCS-503-18	3 1/2	2 1/2	2	18
1490 to 2000	1431 to 1780	2	DCS-504-18	3 1/2	2 7/8	2	18
2250 to 2500	2167 to 2300	2	DCS-505-18	4 1/2	3	2 1/2	18
2750 to 3000	2500 to 2515	2	DCS-506-18	4 1/2	3 1/4	2 1/2	18

For cross reference or other  
information, please contact us.  
[deltastarcc.com](http://deltastarcc.com)



**DELTA STAR  
CONNECTOR COMPANY**

